



◆◆◆ ENGINEERED PRODUCTS ◆◆◆  
**FOR EASY BOLTING**



— A Brand from —



+91 9384689159



info@pentacorp.in



www.pentacorp.in

## Our Support!

### SALES

Product consultation, Customised solution and Demonstrations & Trials.

### SERVICE

Installation and Commissioning, Preventive maintenance, Spares inventory and AMC.

### RENTALS

Short term and long term rentals, Quick delivery and pickup, Backup and replacement & Cost effective solutions.

## Why Choose Us?

- ▶ Decades of Expertise with a focus on performance, reliability and long term success.
- ▶ When you choose us, you choose precision, innovation and trusted engineering guidance.
- ▶ We act as true technical partners - not just suppliers.

## About Our Company

With over 25 years of hands-on experience across various industrial domains we bring unmatched practical knowledge on industrial solutions and insight to every project with commitment to quality.



Refineries



Steel



Mines



Power

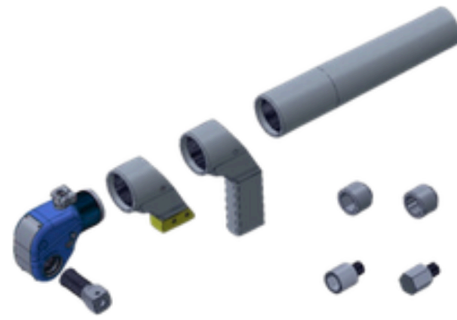


Wind



Railways

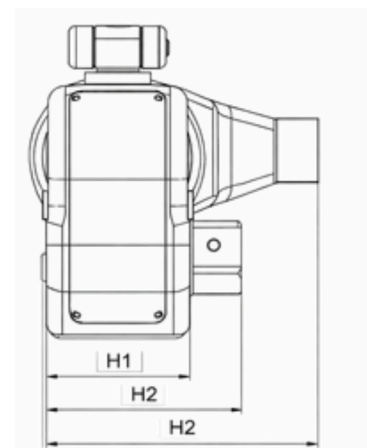
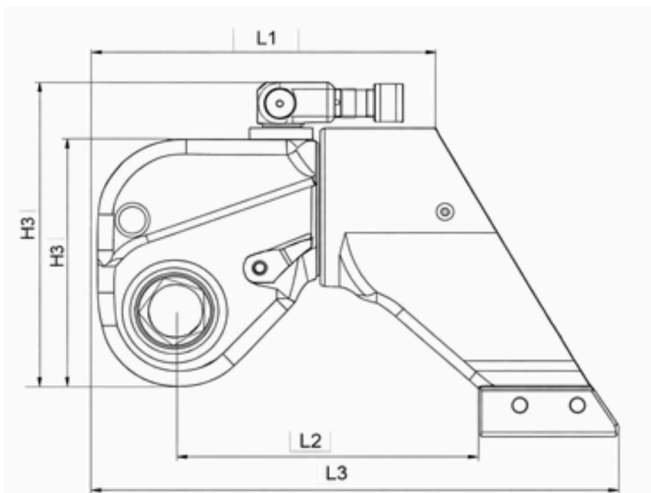
# HYDRAULIC TORQUE WRENCH SQUARE DRIVE TYPE (HT SERIES)



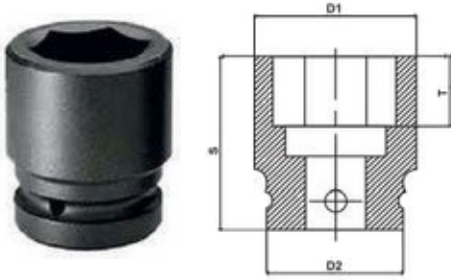
- Square drive sizes from 1/2" to 3 1/2"
- Light weight TITAL399 alloy body
- 360 x 180° Hose swivels
- 60 point adjustable click on type reaction arm
- Anti-backlash pawl
- Bigger tooth design
- Allen, Hex and direct socket drives possible
- HSQ-SA super Alloy for heavy duty application

## Technical & Dimensional Data

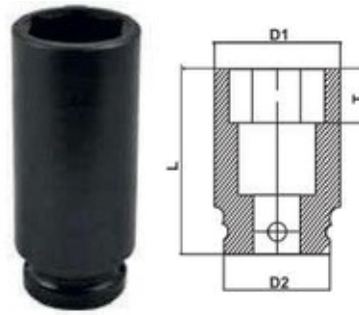
Specification	HSQ-02	HSQ-05	HSQ-08	HSQ-10	HSQ-15	HSQ-20	HSQ-25	HSQ-35	HSQ-50	HSQ-70
Square Drive	3/4"	1"	1 1/2"	1 1/2"	1 1/2"	2 1/2"	2 1/2"	2 1/2"	2 1/2"	2 1/2"
Torque Min-Max Nm	164-1760	433-4332	742-7420	1015-10430	1509-15090	1940-19409	2504-26447	3309-34626	4741-47414	6925-69247
Output Accuracy	±3%	±3%	±3%	±3%	±3%	±3%	±3%	±3%	±3%	±3%
Weight Kg	2	4	7	10.6	12.9	20	25	33.8	43	52
L1 mm	130	170	202	228	237	273	287	323	351	376
L2 mm	102	140	160	184	192	223	248	256	271	295
L3 mm	182	249	286	326	336	391	433	464	494	528
H1 mm	52	70	81	90	100	110	120	138	153	162
H2 mm	77	98	125	134	144	164	187	206	217	226
H3 mm	96	127	149	172	181	206	221	258	279	291
H4 mm	133	165	184	207	216	241	256	231	315	326
R mm	25.8	34.8	39.8	46.8	50.8	56.8	59.8	70.8	76.8	78.8



# 6 POINTS IMPACT SOCKETS



Standard Socket



Deep Socket

Model No.	Square Drive	Nut A/F (inch)	Nut A/F (mm)	D1	D2	S	T	L
HT424	3/4"	3/4"	-	21	44	44	23	90
HT427	3/4"	-	-	27	41	44	23	90
HT428	3/4"	1.1/16"	27	41	44	48	23	90
HT430	3/4"	-	30	44	44	52	24	90
HT431F	3/4"	1.1/4	-	36	44	52	24	90
HT432	3/4"	-	32	49	44	52	26	90
HT436	3/4"	-	36		44	52	28	90
HT436F	3/4"	1.7/16	-	52	44	56	28	90
HT441	3/4"	-	41	57	44	59	36	90
HT441F	3/4"	1.5/8	-	57	44	59	36	90
HT446	3/4"	-	46	67	44	64	37	90
HT446F	3/4"	1.13/16	-	67	44	64	36	90
HT450	3/4"	-	50	70	54	64	37	90
HT451F	3/4"	2	-	73	54	67	39	90
HT455	3/4"	-	55	78	54	67	41	94
HT455F	3/4"	2.3/16	-	78	54	71	41	94
HT460	3/4"	-	60	82	52	72	45	95
HT460F	3/4"	2.3/8	-	82	54	75	45	98
HTS24	1"	-	24	42	54	55	21	100
HTS27	1"	-	27	46	54	55	23	100
HTS27F	1"	1.1/16	-	46	54	55	23	100
HTS30	1"	-	30	50	54	55	24	100
HTS31F	1"	1.1/4	-	51	54	57	24	100
HTS32	1"	-	32	51	54	57	24	100
HTS36	1"	-	36	54	54	60	28	100
HTS36F	1"	1.7/16	-	54	54	60	28	100
HTS41	1"	-	41	63	54	64	36	100
HTS41F	1"	1.5/8	-	63	54	64	36	100
HTS46	1"	-	46	70	54	64	39	100
HTS46F	1"	1.13/16	-	70	54	69	36	100
HTS50	1"	-	50	73	54	72	36	100
HTS51F	1"	2	-	73	54	69	41	100
HTS55	1"	-	55	82	54	76	41	105
HTS55F	1"	2.3/16	-	82	54	80	41	105
HTS60	1"	-	60	86	54	82	45	105
HTS60F	1"	2.3/8	-	88	54	82	45	112
HTS65	1"	-	65	92	54	85	46	118
HTS65F	1"	2.9/16	-	92	54	85	46	118
HTS70	1"	-	70	96	54	88	50	124
HTS70F	1"	2.3/4	-	96	54	88	50	124
HTS75	1"	-	75	100	86	92	57	124
HTS75F	1"	2.15/16	-	100	86	92	57	124
HTS79F	1"	3.1/8	-	105	86	97	57	132
HTS80	1"	-	80	105	86	96	57	132
HTS85	1"	-	85	115	86	100	62	132
HTS88F	1"	3.1/2	-	121	86	102	62	140
HTS90	1"	-	90	127	86	104	62	140
HTS95	1"	-	95	135	86	106	62	140
HTS97F	1"	3.7/8	-	135	86			140

Model No.	Square Drive	Nut A/F (inch)	Nut A/F (mm)	D1	D2	S	T	L
HTS100	1"	--	100	135	86	112	52	143
HT641	1.1/2"	1.13/16	36	34	86	86	28	130
HT641	1.1/2"	-2	-41	69	86	83	30	130
HT646F	1.1/2"	2.3/16	50	75	86	86	32	130
HT646F	1.1/2"	2.9/16	55	81	86	86	36	130
HT651F	1.1/2"	2.3/4	60	81	86	90	39	130
HT655F	1.1/2"	2.15/16		65	85	86	90	41
HT655F	1.1/2"	-3.1/8	-70	88	86	89	45	140
HT660	1.1/2"		-75	95	86	95	45	140
HT660F	1.1/2"	-3.7/8-	-80	96	86	98	45	140
HT665F	1.1/2"	4.1/4	85	102	86	102	50	140
HT670	1.1/2"	3.1/8-	-90	102	86	102	50	140
HT670F	1.1/2"	-3.1/8-	-100	108	86	102	57	150
HT675	1.1/2"		-116	86	108	57	150	
HT675F	1.1/2"	4.1/2 5	105	116	86	108	62	150
HT680	1.1/2"	-5.3/8-		116	86	110	62	150
HT680F	1.1/2"	5.3/4	110	120	86	110	62	150
HT685	1.1/2"	6.1/8	115	128	86	115	62	150
HT690	1.1/2"	6.1/2		130	125	118	65	170
HT690F	1.1/2"	6.7/8	-85	135	125	118	65	170
HT695	1.1/2"	-	90	140	125	123	75	170
HT6100	1.1/2"	-	-95	140	125	123	75	170
HT6105	1.1/2"	-	-100	148	125	128	80	180
HT6105	1.1/2"	-	-105	155	125	133	80	190
HT6110	1.1/2"	-	-110	161	150	138	85	200
HT6110	1.1/2"	-	-115	161	150	138	85	200
HT6120F	1.1/2"	-	-130	175	150	149	94	200
HT780F	2.1/2"	-	-145	135	125	140	62	190
HT780F	2.1/2"	-	-	145	125	140	65	190
HT790	2.1/2"	-	-	145	125	140	65	190
HT795	2.1/2"	-	-	155	125	150	70	190
HT795F	2.1/2"	-	-	155	125	150	70	190
HT7100	2.1/2"	-	-	155	125	150	80	200
HT7105	2.1/2"	-	-	165	150	160	80	200
HT7110	2.1/2"	-	-	165	150	160	80	210
HT7115F	2.1/2"	-	-	175	150	170	80	210
HT7125F	2.1/2"	-	-	195	150	175	90	220
HT7130	2.1/2"	-	-	195	175	102	102	220
HT7135F	2.1/2"	-	-	205	180	180	105	220
HT7145	2.1/2"	-	-	220	150	180	105	230
HT7145F	2.1/2"	-	-	220	180	180	110	230
HT7155F	2.1/2"	-	-	230	180	180	110	250
HT7165F	2.1/2"	-	240	240	180	200	110	-
HT7175F	2.1/2"	-	255	255	180	200	120	-

# HYDRAULIC TORQUE WRENCH HEX DRIVE TYPE (HTX SERIES)



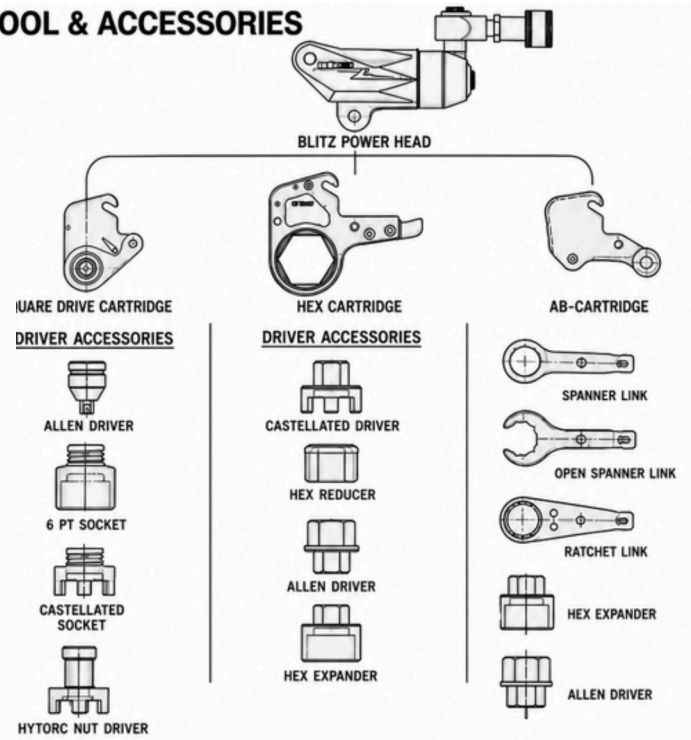
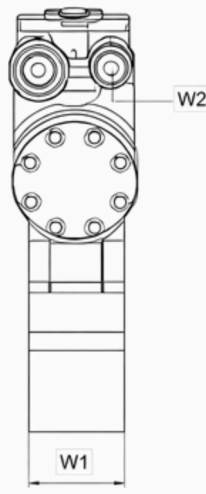
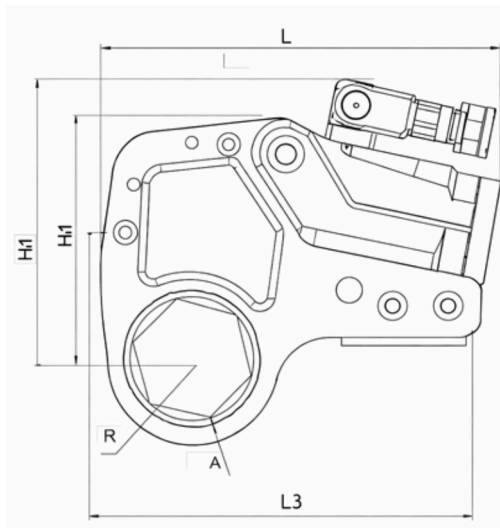
Limited Clearance torque wrench (HTX)

- Convertible design
- Light weight TITAL399 alloy body
- 360 x 360 degree hose uni swivels
- In line reaction
- Anti backlash pawl
- Biggertooth design
- Attachments for all applications.



Made in India Designed, Manufactured and assembled in INDIA with world class quality standards.

## TOOL & ACCESSORIES



Specification	HTX-3	HTX-6	HTX-9	HTX-20	HTX-25	HTX-40
Torque Min - Max (Nm)	244-2534	489-5392	1017-10452	1724-17926	2247-22899	4064-40639
Accuracy (%)	±3	±3	±3	±3	±3	±3
Weight (Kg)	2.2	5	9.6	16.9	22.9	38
L1 (mm)	205	251.3	302.5	367	400.5	457.5
L2 (mm)	147	188	223	283	306	364
H1 (mm)	129	163	189	218	246	282
H2 (mm)	100	136	166	198	224	265
W1 (mm)	32	41	52	65	70	84
W2 (mm)	24	33	47	58	62	84
R (mm)	41.3	53.8	71	90.5	99.8	115.8

# HEXAGON CASSETTE LINKS



HTX-2		
Link	Imperial	Metric
HTX-2-19	3/4"	19mm
HTX-2-20	13/16"	-
HTX-2-21	-	21mm
HTX-2-22	7/8"	22mm
HTX-2-24	15/16"	24mm
HTX-2-25	1"	-
HTX-2-27	1.1/16"	27mm
HTX-2-28	1.1/8"	-
HTX-2-30	1.13/16"	30mm
HTX-2-31	1.1/4"	-
HTX-2-32	-	32mm
HTX-2-33	1.5/16"	-
HTX-2-34	-	34mm
HTX-2-35	1.3/8"	35mm
HTX-2-36	-	36mm
HTX-2-37	1.7/16"	-
HTX-2-38	1.1/2"	38mm
HTX-2-39	1.9/16"	-
HTX-2-41	1.5/8"	41mm
HTX-2-42	1.11/16"	-
HTX-2-44	1.3/4"	-
HTX-2-46	1.13/16"	46mm
HTX-2-47	1.7/8"	-
HTX-2-49	1.15/16"	49mm
HTX-2-50	-	50mm
HTX-2-51	2"	-
HTX-2-52	2.1/16"	-
HTX-2-54	2.1/8"	-
HTX-2-55	2.3/16"	55mm
HTX-2-57	2.1/4"	-
HTX-2-59	2.5/16"	-
HTX-2-60	2.3/8"	60mm
HTX-2-62	2.7/16"	-
HTX-2-64	2.1/2"	-
HTX-2-65	2.9/16"	65mm

HTX-5		
Link	Imperial	Metric
HTX-5-25	1"	-
HTX-5-27	1.1/16"	27mm
HTX-5-28	1.1/8"	-
HTX-5-30	1.3/16"	30mm
HTX-5-31	1.1/4"	-
HTX-5-32	-	32mm
HTX-5-33	1-5/16"	-
HTX-5-34	-	34mm
HTX-5-35	1-3/8"	-
HTX-5-36	-	36mm
HTX-5-37	1-7/16"	-
HTX-5-38	1-1/2"	38mm
HTX-5-39	1-9/16"	-
HTX-5-41	1-5/8"	41mm
HTX-5-42	1-11/16"	-
HTX-5-44	1-3/4"	-
HTX-5-46	1-13/16"	46mm
HTX-5-47	1-7/8"	-
HTX-5-49	1-15/16"	49mm
HTX-5-50	-	50mm
HTX-5-51	2"	-
HTX-5-52	2-1/16"	-
HTX-5-53	2-1/8"	-
HTX-5-55	2-3/16"	55mm
HTX-5-57	2-1/4"	-
HTX-5-58	2-5/16"	-
HTX-5-60	2-3/8"	60mm
HTX-5-61	2-7/16"	-
HTX-5-63	2-1/2"	-
HTX-5-65	2-9/16"	65mm
HTX-5-66	2-5/8"	-
HTX-5-68	2-11/16"	-
HTX-5-70	2-3/4"	70mm
HTX-5-71	2-13/16"	-
HTX-5-73	2-7/8"	-
HTX-5-75	2-15/16"	75mm
HTX-5-76	3"	-
HTX-5-77	3-1/16"	-
HTX-5-79	3-1/8"	-
HTX-5-80	-	80mm

HTX-10		
Link	Imperial	Metric
HTX-10-41	1-5/8"	41mm
HTX-10-42	1-11/16"	-
HTX-10-44	1-3/4"	-
HTX-10-46	1-13/16"	46mm
HTX-10-47	1-7/8"	-
HTX-10-49	1-15/16"	49mm
HTX-10-50	-	50mm
HTX-10-51	2"	-
HTX-10-52	2-1/16"	-
HTX-10-54	2-1/8"	-
HTX-10-55	2-3/16"	55mm
HTX-10-57	2-1/4"	-
HTX-10-60	2-3/8"	60mm
HTX-10-61	2-7/16"	-
HTX-10-63	2-1/2"	-
HTX-10-65	2-9/16"	65mm
HTX-10-68	2-11/16"	-
HTX-10-70	2-3/4"	70mm
HTX-10-71	2-13/16"	-
HTX-10-73	2-7/8"	-
HTX-10-75	2-15/16"	75mm
HTX-10-76	3"	-
HTX-10-77	3-1/16"	-
HTX-10-79	3-1/8"	-
HTX-10-81	3-3/16"	-
HTX-10-82	3-1/4"	-
HTX-10-84	3-5/16"	-
HTX-10-85	-	85mm
HTX-10-87	3-7/16"	-
HTX-10-88	3-1/2"	-
HTX-10-90	-	90mm
HTX-10-91	3-9/16"	-
HTX-10-93	3-11/16"	-
HTX-10-95	3-3/4"	95mm
HTX-10-96	3-13/16"	-
HTX-10-98	3-7/8"	-
HTX-10-100	3-15/16"	100mm
HTX-10-101	4"	-
HTX-10-105	4-1/8"	105mm
-	-	-

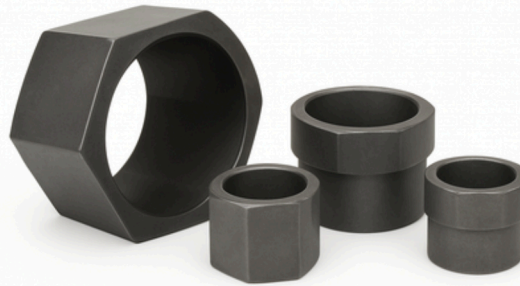
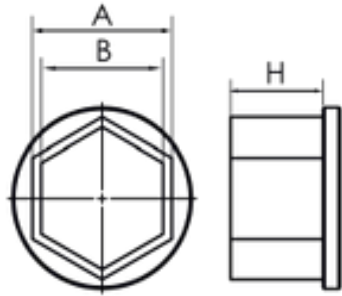
# HEXAGON CASSETTELINKS

HTX-20/25		
Link	Imperial	Metric
HTX-20/25-50		50mm
HTX-20/25-51	2"	
HTX-20/25-52	2-1/16"	
HTX-20/25-53	2-1/8"	
HTX-20/25-55	2-3/16"	55mm
HTX-20/25-57	2-1/4"	
HTX-20/25-58	2-5/16"	
HTX-20/25-60	2-3/8"	60mm
HTX-20/25-62		
HTX-20/25-63	2-1/2"	
HTX-20/25-65	2-9/16"	65mm
HTX-20/25-66	2-5/8"	
HTX-20/25-68	2-11/16"	
HTX-20/25-70	2-3/4"	70mm
HTX-20/25-71	2-13/16"	
HTX-20/25-73	2-15/16"	75mm
HTX-20/25-75	3"	
HTX-20/25-76	3-1/16"	
HTX-20/25-79	3-1/8"	
HTX-20/25-80		80mm
HTX-20/25-80	3-3/16"	80mm
HTX-20/25-82	3-1/4"	
HTX-20/25-84	3-5/16"	
HTX-20/25-85		85mm
HTX-20/25-86	3-3/8"	
HTX-20/25-87	3-7/16"	
HTX-20/25-89	3-1/2"	
HTX-20/25-90		90mm
HTX-20/25-91	3-9/16"	
HTX-20/25-93	3-5/8"	
HTX-20/25-93	3-11/16"	
HTX-20/25-95	3-3/4"	95mm
HTX-20/25-96	3-13/16"	
HTX-20/25-98	3-7/8"	
HTX-20/25-100	3-15/16"	100mm
HTX-20/25-101	4"	
HTX-16-104	4-1/8"	
HTX-20/25-105	4-3/16"	105mm
HTX-20/25-106	4-3/16"	
HTX-20/25-107	4-1/4"	
HTX-20/25-109	4-5/16"	
HTX-20/25-110	4-7/16"	110mm
HTX-20/25-112	4-7/16"	
HTX-20/25-115	4-1/2"	115mm
HTX-20/25-117		117mm

HTX-40		
Link	Imperial	Metric
HTX-40-108	4-1/4"	
HTX-40-109	4-5/16"	
HTX-40-110		110mm
HTX-40-111	4-3/8"	
HTX-40-113	4-7/16"	
HTX-40-114	4-1/2"	
HTX-40-115		115mm
HTX-40-116	4-9/16"	
HTX-40-117	4-5/8"	117mm
HTX-40-118	4-11/16"	
HTX-40-120		120mm
HTX-40-121	4-3/4"	
HTX-40-122	4-13/16"	
HTX-40-123	4-7/8"	
HTX-40-125		125mm
HTX-40-126	4-15/16"	
HTX-40-128	5-1/16"	127mm
HTX-40-130	5-1/8"	
HTX-40-131	5-3/16"	
HTX-40-133	5-1/4"	
HTX-40-134	5-5/16"	135mm
HTX-40-136	5-3/8"	
HTX-40-138	5-7/16"	
HTX-40-140	5-1/2"	140mm
HTX-40-141	5-9/16"	
HTX-40-143	5-5/8"	
HTX-40-144	5-11/16"	
HTX-40-145		145mm
HTX-40-146	5-3/4"	
HTX-40-147	5-13/16"	
HTX-40-149	5-7/8"	
HTX-40-150		150mm
HTX-40-151	5-15/16"	
HTX-40-152	6"	
HTX-40-153	6-1/16"	
HTX-40-155		155mm
HTX-40-156	6-1/8"	
HTX-40-157	6-3/16"	
HTX-40-158	6-1/4"	
HTX-40-160		160mm
HTX-40-161	6-5/16"	
HTX-40-162	6-3/8"	
HTX-40-163	6-7/16"	
HTX-40-165	6-1/2"	165mm
HTX-40-166	6-9/16"	
HTX-40-168	6-5/8"	
HTX-40-170	6-11/16"	170mm
HTX-40-171	6-3/4"	
HTX-40-173	6-13/16"	
HTX-40-174	6-7/8"	
HTX-40-175		175mm



# HEXAGON REDUCERS(IMPERIAL SIZES)- HTHR FOR HTX TOOLS



Outside A/F size	Inside A/F size	HTX-2 Height-1.25" Model Number	HTX-5 Height-1.625" Model Number	HTX-10 Height-2.1" Model Number	HTX-20/25 Height-2.55" Model Number
1.1/4"	1.1/16"	HTX-2-125-106	HTX-5-125-106	-	-
1.7/16"	1.1/16"	HTX-2-143-106	HTX-5-143-106	-	-
1.7/16"	1.1/4"	HTX-2-143-125	HTX-5-143-125	-	-
1.5/8"	1.1/4"	HTX-2-162-125	HTX-5-162-125	-	-
1.5/8"	1.7/16"	HTX-2-162-143	HTX-5-162-143	-	-
1.13/16"	1.7/16"	HTX-2-181-143	HTX-5-181-143	-	-
1.13/16"	1.5/8"	HTX-2-181-162	HTX-5-181-162	HTX-10-181-162	-
2"	2"	HTX-2-200-181	HTX-5-200-181	HTX-10-200-181	-
2.3/16"	1.13/16"	-	HTX-5-218-162	HTX-10-200-162	-
2.3/16"	1.5/8"	-	HTX-5-218-181	HTX-10-218-162	-
2.3/16"	2.13/16"	-	HTX-5-218-200	HTX-10-218-181	-
2.3/8"	1.13/16"	HTX-2-237-181	HTX-5-237-181	-	-
2.3/8"	2"	HTX-2-237-200	HTX-5-237-200	HTX-10-237-200	-
2.3/8"	2.3/16"	HTX-2-237-218	HTX-5-237-218	HTX-10-237-218	-
2.9/16"	2.3/16"	-	HTX-5-256-200	HTX-10-256-200	HTX-20/25-256-200
2.9/16"	2.3/8"	-	HTX-5-256-218	HTX-10-256-218	HTX-20/25-256-218
2.9/16"	2"	-	HTX-5-256-237	HTX-10-256-237	HTX-20/25-256-237
2.3/4"	2.3/16"	-	HTX-5-275-218	HTX-10-275-218	HTX-20/25-275-218
2.3/4"	2.3/8"	-	HTX-5-275-237	HTX-10-275-237	HTX-20/25-275-237
2.3/4"	2.9/16"	-	HTX-5-275-256	HTX-10-275-256	HTX-20/25-275-256
2.15/16"	2.3/8"	-	HTX-5-293-237	HTX-10-293-237	HTX-20/25-293-237
2.15/16"	2.9/16"	-	HTX-5-293-256	HTX-10-293-256	HTX-20/25-293-256
2.15/16"	2.9/16"	-	HTX-5-293-275	HTX-10-293-275	HTX-20/25-293-275
3.1/8"	2.3/4"	-	HTX-5-312-256	HTX-10-312-256	HTX-20/25-312-256
3.1/8"	2.9/16"	-	HTX-5-312-275	HTX-10-312-275	HTX-20/25-312-275
3.1/8"	2.3/4"	-	HTX-5-312-293	HTX-10-312-293	HTX-20/25-312-293
3.1/2"	2.15/16"	-	HTX-5-312-293	HTX-10-312-293	HTX-20/25-312-293
3.1/2"	2.15/16"	-	-	HTX-10-350-293	HTX-20/25-350-293
3.7/8"	3.1/8"	-	-	HTX-10-350-312	HTX-20/25-350-312
3.7/8"	3.1/8"	-	-	HTX-10-387-312	HTX-20/25-387-312
4.1/8"	3.1/2"	-	-	HTX-10-387-350	HTX-20/25-387-350
4.5/8"	3.7/8"	-	-	HTX-10-412-350	HTX-20/25-412-350
4.5/8"	3.7/8"	-	-	HTX-10-412-387	HTX-20/25-412-387

Outside A/F size	Inside A/F size	HTX-40 Height-3.34" Model Number
5"	4.1/4"	HTX-40-462-425
5"	4.1/4"	HTX-40-500-425
5.5/16"	4.5/8"	HTX-40-500-462
5.5/16"	5"	HTX-40-531-462
5.3/4"	5"	HTX-40-531-500
5.3/4"	5"	HTX-40-575-500
6.1/8"	5.3/8"	HTX-40-575-573
6.1/8"	5.3/8"	HTX-40-612-573
6.1/2"	5.3/4"	HTX-40-612-575
6.1/2"	5.3/4"	HTX-40-650-575
6.7/8"	6.1/8"	HTX-40-650-612
6.7/8"	6.1/8"	HTX-40-687-612
7.3/16"	6.1/2"	HTX-40-687-650
7.3/16"	6.7/8"	HTX-40-718-650
7.7/16"	6.7/8"	HTX-40-718-687
7.7/16"	7.3/16"	HTX-40-744-687
7.5/8"	6.7/8"	HTX-40-744-718
7.5/8"	7.7/16"	HTX-40-762-687
7.7/8"	7.3/16"	HTX-40-762-744
7.7/8"	7.5/8"	HTX-40-787-744
7.7/8"	7.5/8"	HTX-40-787-762

## MANUAL TORQUE WRENCH (MTW)

We also offer Manual Torque Wrenches of following types:

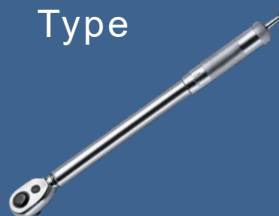
Open Jaw  
Fixed Head  
Type



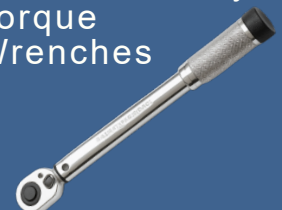
Bi-HexRing  
Type



Preset Torque  
Production  
Type



Ultra Light Weight  
Aluminum alloy  
Torque  
Wrenches



# HEXAGON REDUCERS (IMPERIAL SIZES)

HEXAGON REDUCERS (METRIC SIZES) - HTX TOOLS



Outside A/F size	Inside A/F size	HTR-2 Height-32mm Model Number	THX-5 Height-42mm	THX-10 Height-54mm	THX-20/25 Height-65mm	THX-40 Height-85mm
30	24	HTHR-2-30-24	-	-	-	-
32	24	HTHR-2-32-24	-	-	-	-
32	27	HTHR-2-32-27	-	-	-	-
36	30	HTHR-2-36-30	-	-	-	-
41	36	HTHR-2-41-36	HTHR-5-41-36	-	-	-
46	36	HTHR-2-46-36	HTHR-5-46-36	-	-	-
46	41	HTHR-2-46-41	HTHR-5-46-41	-	-	-
50	41	HTHR-2-50-41	HTHR-5-50-41	HTHR-10-50-41	-	-
50	46	-	HTHR-5-50-46	HTHR-10-50-46	-	-
55	41	HTHR-2-55-41	HTHR5-5-55-41	HTHR-10-55-41	-	-
55	50	-	HTHR-5-55-50	HTHR-10-55-50	-	-
60	46	-	HTHR-5-60-46	HTHR-10-60-46	-	-
60	50	-	HTHR-5-60-50	HTHR-10-60-50	HTHR-20/25-60-50	-
60	55	-	HTHR-5-60-55	HTHR-10-60-55	-	-
65	50	-	HTHR-5-65-50	HTHR-10-65-50	HTHR-20/25-65-50	-
65	55	-	HTHR-5-65-55	HTHR-10-65-55	HTHR-20/25-65-55	-
65	60	-	HTHR-5-65-60	HTHR-10-65-60	HTHR-20/25-65-60	-
70	55	-	HTHR-5-70-55	HTHR-10-70-55	HTHR-20/25-70-55	-
70	60	-	HTHR-5-70-60	HTHR-10-70-60	HTHR-20/25-70-60	-
70	65	-	HTHR-5-70-65	HTHR-10-70-65	HTHR-20/25-70-65	-
75	60	-	HTHR-5-75-60	HTHR-10-75-60	HTHR-20/25-75-60	-
75	65	-	HTHR-5-75-65	HTHR-10-75-65	HTHR-20/25-75-65	-
75	70	-	HTHR-5-75-70	HTHR-10-75-70	HTHR-20/25-75-70	-
80	65	-	HTHR-5-80-65	HTHR-10-80-65	HTHR-20/25-80-65	-
80	70	-	HTHR-5-30-70	HTHR-10-80-70	HTHR-20/25-80-70	-
80	75	-	-	HTHR-10-80-75	HTHR-20/25-80-75	-
85	70	-	-	HTHR-10-85-70	HTHR-20/25-85-70	-
85	75	-	-	HTHR-10-85-75	HTHR-20/25-85-75	-
85	80	-	-	-	HTHR-20/25-85-80	-
90	75	-	-	HTHR-10-90-75	HTHR-20/25-90-75	-
90	80	-	-	HTHR-10-90-80	HTHR-20/25-90-80	-
90	85	-	-	HTHR-10-90-85	HTHR-20/25-90-85	-
95	80	-	-	HTHR-10-95-80	HTHR-20/25-95-80	-
95	85	-	-	HTHR-10-95-85	HTHR-20/25-95-85	-
95	90	-	-	HTHR-10-95-90	HTHR-20/25-95-90	-
100	85	-	-	HTHR-10-100-85	HTHR-20/25-100-85	-
100	90	-	-	HTHR-10-100-90	HTHR-20/25-100-90	-
100	95	-	-	HTHR-10-100-95	HTHR-20/25-100-95	-
105	90	-	-	HTHR-10-105-90	HTHR-20/25-105-90	-
105	95	-	-	HTHR-10-105-95	HTHR-20/25-105-95	-
105	100	-	-	HTHR-10-105-100	HTHR-20/25-105-100	-
110	95	-	-	-	HTHR-20/25-110-95	HTHR-40-110-95
110	100	-	-	-	HTHR-20/25-110-100	HTHR-40-110-100
110	105	-	-	-	HTHR-20/25-110-105	HTHR-40-110-105
115	100	-	-	-	HTHR-20/25-115-100	HTHR-40-115-100
115	105	-	-	-	HTHR-20/25-115-105	HTHR-40-115-105
115	110	-	-	-	HTHR-20/25-115-110	HTHR-40-115-110
135	110	-	-	-	-	HTHR-40-135-110
135	115	-	-	-	-	HTHR-40-135-115
135	120	-	-	-	-	HTHR-40-135-120
145	110	-	-	-	-	HTHR-40-145-110
145	115	-	-	-	-	HTHR-40-145-115
145	130	-	-	-	-	HTHR-40-145-130
160	130	-	-	-	-	HTHR-40-160-130
160	145	-	-	-	-	HTHR-40-160-145
175	145	-	-	-	-	HTHR-40-175-145
175	160	-	-	-	-	HTHR-40-175-160

# ELECTRIC POWERPACK FOR HYDRAULIC TORQUE WRENCH



## HTHP-07-40



- Remote control Pendant
- Visual Temperature strips (60° - 90°)
- A Visual Off Level Gauge
- Safety Interlocks
- Temperature Interlocks

### Features :

- Heat exchanger is standard included
- A quiet (<75dBA), lightweight pump with a compact footprint – easy to move around and through the work site
- Durable roll cage with an ergonomically sized handle and shielded gauge – a pump that is easy to put into position and safe from on site operational hazards

Parameter	Unit	Value
Main Voltage	AC	230 V, 50 Hz
Motor Capacity	kW / A	1.10 / 7.20
Normal Pressure	bar	700 Max.
Oil Flow Rate	Ltr/min	9.7 LPM @ 70 bar; 1 LPM @ 700 bar
Oil Type	Grade	ISO VG 68
Max Oil Temperature	°C	60
Weight Without Oil	kg	38
Protection	Std.	IP54
Tank Volume	Ltr.	6 Lt

## AIR OPERATED POWERPACK FOR HYDRAULIC TORQUE WRENCH (HTPP-700)

- Substantial savings in energy and oil consumption.
- Analog or Digital pressure gauges assure the highest possible read out and adjustment precision.
- High speed/flow. Remotely operation forward and reverse.
- Light weight & compact design. Runs on 70 cfm / 90 PSI of air.



## HTEP-07-240

- Adopt standard slide valve, stable reversing and good versatility.
- Two speed flow design, switch flow automatically.
- Al-Tialoy pump body, lightweight and easy to carry.
- Brush less high power motor, easy maintenance and long life.
- High performance radiator, the fan starts automatically when oil temperature reaches 35 degree, to guarantee long time working.
- The electrical box adopts integrated circuit, able to match hydraulic wrench, hydraulic plier etc.



Parameter	Unit	Value
Require maximum Air pressure	Bar	7
Air consumption at 7 bar		2300
Sound pressure level	Db	76
Nominal Pressure		700 Max. Flow
1st Stage	lt/min	8 @ 70 bar
2nd Stage	lt/min	0.98 @ 700 bar
Usable Volume	litre	4
Oil Type	Grade	ISO V6-68
Ambient Temperature	C	45°
Max Oil Temperature	C	60°
Weight	kg	28

Parameter	Value
Max Pressure (Bar)	700
Oil Flow (Lpm)	High-pressure approx 0.8 lpm, low-pressure 8 lpm available
Oil Volume (L)	8 Ltr Volume
High Pressure Hose (meters)	6 meters each
Power Supply	220v 50hz and 110v, 60hz
Dimensions	450mm × 330mm × 430mm
Connection	G 1/4"
Weight	28 kg

### Additional Features :

- Pneumatic Control Pendant
- Visual Temperature Strips (60°-90°)
- Visual off Level Gauge
- Safety Valve
- Breather (also for oil filling)

# ELECTRIC SERVO TORQUE WRENCH (HTS)



## Features :

1. Light: High Integration advanced technology makes operator easier, Not necessary to carry big control cases.
2. Modern Motor : New advanced DC servo motor brings lower noise, faster, accurate.
3. Accurate : High accuracy +/-2%, repeatability +/-1%
4. Humanization Design : adjusting torque every 10Nm. Dynamic display by large LCD screen
5. International power supply : AC 90V-264V, 47-63HZ
6. A Robust Design with the ability to adapt to nearly any Handle Configuration.
7. SmartApp : Optional Wireless Blue tooth transfer, data recording storage system, tracking results
8. Additional Function : Torque + Angle + Number of angle turns + Number of nuts
9. Close-loop system : Optional Transducerized system. Built in transducer increase accuracy to +/-1%
10. STW series is Bluetooth and wireless compatible and its connectivity with C-Series Smart Socket for transducer verified joint calibration
11. All Electric Servo Torque Wrench tools are Shipped with Calibration Certificate.



Model	Min Torque (Nm)	Max Torque (Nm)	S	D	L	H1	H2	R1	R2	Weight (Kg)	Max Speed (rpm)
HTS-08	150	800	3/4"	60	385	95	240	53	102	5.5	20
HTS-15	350	2000	3/4"	76	400	95	240	66	133	6	14
HTS-30	600	3000	1"	86	430	95	240	78	145	9.8	6.5
HTS-40	800	4000	1"	95	430	95	240	90	155	10	5.5
HTS-60	900	6000	1-1/2"	110	480	95	240	80	150	13.3	4
HTS-80	1500	8000	1-1/2"	117	500	95	240	90	155	16	3
HTS-100	2000	10000	1-1/2"	125	510	95	240	93	158	18	2.5
HTS-150	2500	15000	1-1/2"	138	530	95	240	95	160	22	1.5

# BATTERY OPERATED TORQUE WRENCH (HTB)



Model	Min Torque (Nm)	Max Torque (Nm)	S	D	L	H1	H2	R1	R2	Weight (Kg)	Max Speed (rpm)
HTB-05S	100	500	3/4"	60	270	76	245	53	102	4.3	26
HTB-10S	130	1000	3/4"	70	300	76	245	66	114	4.8	188
HTB-15S	180	1500	1"	76	317	76	245	66	135	5.2	64
HTB-20S	250	2000	1"	76	317	76	245	66	135	5.5	33
HTB-30S	480	3100	1"	86	340	76	245	78	145	7.5	22
HTB-40S	650	4000	1-1/2"	95	350	76	245	78	145	9.5	-
HTB-50S	850	5000	1-1/2"	103	355	76	245	90	155	10	-
HTB-60S	1100	6000	1-1/2"	110	380	76	245	90	155	12	-
HTB-80S	1900	8000	1-1/2"	115	415	76	245	90	155	14	-

Digital Display Battery Operated torque wrench is a product that includes a numerical display and display torque setting, Programmable torque value.

Standard AC to DC Power adaptor for connection. (Optional) Accuracy up to +/-3%, Repeatability +/-2%

Reverse / Forward Trigger

Two speed automatic gearbox eliminating the time between the time consuming switch.

Light Weight & durable.

Using Brushless DC Motor (No More Carbon Brush Expenses).

Battery charging level Indicator.

**More functions:** Torque, Torque+Angle turn, number of angle turns, number of nuts

Smart Android Mobile APP: Optional Wireless Wifi data transfer, data recording storage millions of applications, Real time tracking results, Graph

Close-loop system: Optional Transducerized system. Built in transducer increase accuracy to +/-1%

Fast Charger: Now charge your Battery within a 45 minutes.

Machine comes with 2 x 18V 5Ah lithium Batteries and a fast charger. (36V Motor, Batteries Optional)

Our Battery cells are highly durable and qualified to BIS Standards

All Battery Operated Torque Wrench tools are shipped complete with NABL Traceable Calibration Certificate.

Offset Fixture and Customization is available (Optional)

# PNEUMATIC TORQUE WRENCH (HTE)



## Accessories



### Sliding Reaction Arms

- Modify the reaction location to access bolts with variable pitches.
- Adjustable from 10.2 cm to 30.5 cm (4" to 12") from center of spline

### Nose Extensions

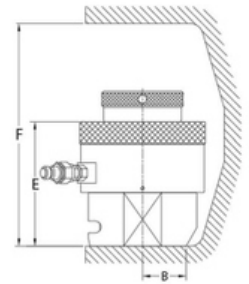
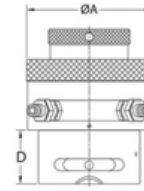
- Access deep bolts • 15.30 & 45cm (6", 12" & 18")

### Filter Regulator Lubricator (FRL)

Recommended for use with all PTW pneumatic torque wrenches. Provides clean, lubricated air and allows for air pressure adjustment. Filter Regulator Lubricator (FRL) Recommended for use with all PTW pneumatic torque wrenches. Provides clean, lubricated air and allows for air pressure adjustment.

Model	Min Torque (Nm)	Max Torque (Nm)	S	D	L	H1	H2	R1	R2	Weight (Kg)	Max Speed (rpm)
HTE-05	100	500	3/4"	60	170	70	185	56	99	4	50
HTE-10	150	1000	3/4"	74	250	70	185	62	112	4.8	28
HTE-15	200	1500	1"	76	260	70	185	70	130	5.2	21
HTE-20	300	2000	1"	76	260	70	185	70	130	5.5	15
HTE-30	500	3000	1"	93	340	70	185	80	150	7.5	10
HTE-40	700	4000	1"	97	340	70	185	80	150	9.5	7
HTE-60	1000	6000	1-1/2"	105	380	70	185	93	158	14	5
HTE-80	2000	8000	1-1/2"	113	380	70	185	93	158	18	4

# HYDRAULIC BOLT TENSIONER(HBT)



Model	Bolt Size		Cylinder	Area	Dimension						Weight
	Metric	Inch			A	B	C	D	E	F	
HBT-3	M16	-	23.5	15.7	75	32.5	168	90	62	47-51	2
	M18	3/4"									
	M20	-									
	M22	7/8"									
	M24	1"									
HBT-5	M27	1-1/8"	50	35	102	47	187	106	60	65-71	4
	M30	-									
	M33	1-1/4"									
	M36	1-3/8"									
	M39	1-1/2"									
HBT-9	M39	1-1/2"	90	59.7	133	61	208	120	60	66-93	6
	M42	1-5/8"									
	M45	1-3/4"									
	M48	1-7/8"									
HBT-13	M52	2"	130	83	163	73	231	135	62	106-114	10
	M56	2-1/4"									
	M60	-									
	M64	2-1/2"									
HBT-19	M64	2-1/2"	190	123	193	86.5	254	150	62	128-135	15
	M68	-									
	M72	2-3/4"									
	M76	3"									
HBT-27	M76	3"	270	176	233	110	286	180	73	155-167	24
	M80	-									
	M85	3-1/8"									
	M90	3-1/2"									
	M95	3-3/4"									
	M100	4"									
HBT-44	M110	4-1/2"	440	251	280	111-121	304-338	181-197	37-40	210-233	45
	M120	4-3/4"									
	M125	5"									
BT-54	M130	5-1/4"	540	317	325	126-141	354-388	202-216	42-47	243-275	73
	M140	5-1/2"									
	M150	5-3/8"									

# AIR OPERATED POWERPACK FOR BOLT TENSIONER (HTPP)



## Characteristic Feature:

- Easy to operate
- Light weight Compact construction
- Stationary/Portable
- Pneumatic drive
- No heat, flame or spark risk

## Optional Accessories:

- High Pressure Hose
- High pressure Quick release coupling
- Remote operation Pneumatic/Electric
- Digital data logger
- Mechanical Chart recorder

## AIR OPERATED TENSIONING PUMP

MODEL	HTPP
Pressure Ratio	1:370 bar
Outlet Pressure Max	2000 bar
Utilities	Oil
Flow Max	Depending on Application
Connection Inlet	Drive Air 3/8" BSPF
Connection Outlet	9/16-18 UNF(F)
Air Driven Pressure	Min. 1 bar - Max. 6 bar
Dimension	Approx. 320(L) X 300(D) X 570(H)
Weight	Approx. 25kg without Oil

HTPP-15-AP



## Pneumatic Tensioning Pump HTPP-15-AP



- Model: HTPP
- Power: 3.0kW Motor
- Air Requirement:
- 3.4m<sup>3</sup>/min & 6bar
- Hydraulic Tank Capacity: 6 liters
- Output Flow (Low-High): 6 - 0.261/m
- Pressure: 0 - 2000 bar (29,000 psil)
- Output Port: 2-off G1/4"
- Weight: 24kg
- Envelope Dimension (L x W x H): 419x 267 x 434mm

## Electric Tensioning Pump ETEP



- Model: ETEP
- Power: 1.1kW, 220V/50Hz Motor
- Hydraulic Tank Capacity: 6 liters
- Output Flow (Low-High): 6 - 0.311/m
- Pressure: 0 - 2000 bar (29,000 psil)
- Output Port: 2-off G1/4"
- Weight: 27kg
- Envelope Dimension (L x W x H): 419x 292 x 434mm

# Hose | Fitting



## Quick Connect Coupling

Female Coupling  
Max Working Pressure: 1,500 bar.  
G1/4" Female Thread

Male Coupling  
Max Working Pressure: 1,500 bar.  
G1/4" Female Thread



## 3-Ports Manifold Block

Max Working Pressure:  
1,500 bar. inclusive  
3-off male couplings



## Adapter Fitting

G1/4" Male  
Thread both ends



## Hydraulic Hoses

Max Working Pressure: 1,800 bar, couplings sold separately.  
Available lengths: 1m, 2m, 3m, 5m, 10m, 30m.  
Length can be customized on request.

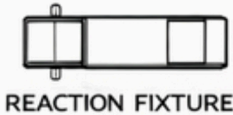
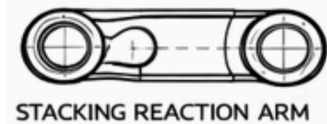
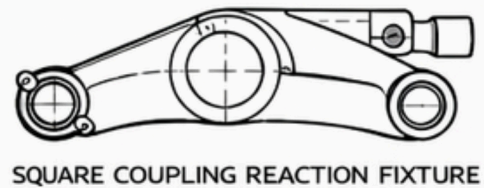
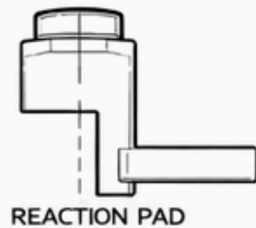
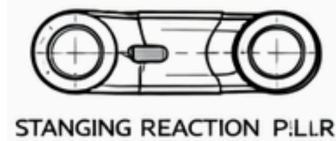
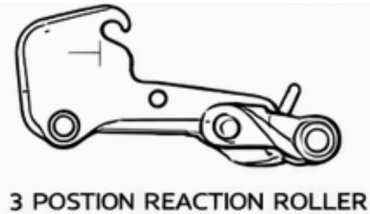
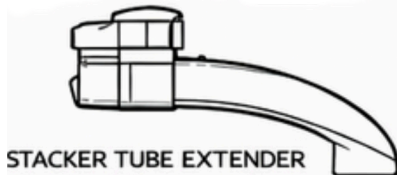


## Downline Adapter Fitting

Max Working Pressure:  
1,500 bar. inclusive 2-off male couplings



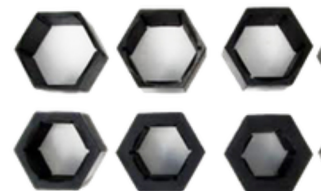
## Reaction Accessories



SLUGGING WRENCH



HEAVY DUTY IMPACT SOCKETS



HEX REDUCERS



◆◆◆ ENGINEERED PRODUCTS ◆◆◆  
**FOR EASY BOLTING**



**High Quality Products**

**Reliable Solutions**

**Powerful Performance**

— A Brand from —



**PENTA  
CORPORATION**



+91 9384689159



info@pentacorp.in



www.pentacorp.in